

**CBS
STUDIO
CENTER™**

Newsletter

AND THE EMMY GOES TO...

A brief history of television's most prestigious award

By Judi Miller

In 1946 the Academy of Television Arts and Sciences (ATAS) was founded by Syd Cassyd. Cassyd, a reporter for *Boxoffice* magazine and a grip on the Paramount lot, recognized television's potential and organized a meeting to discuss forming an academy for television, similar to what the Academy of Motion Pictures Arts and Sciences was for the film industry. Only seven people showed up, but by the fifth meeting there were 250 members. Entertainer Edgar Bergen was the first elected president and took office in January of 1947.

By 1948 preparations for the Academy's first award show were underway. The award statuette, a winged woman holding an atom, was designed by television engineer Louis McManus (he used his wife Dorothy as the model). The wings represent the muse of art, the atom the electron of science.

Then came naming the award. Cassyd suggested calling it the Ike, which was the nickname of the television iconoscope tube. However, the other members were concerned they would be linked to Dwight "Ike" Eisenhower, so instead they came up with Immy, a term used for the early image orthicon camera. The name was then feminized to match the female symbol and Emmy was born!

The very first Emmy was awarded on January 25, 1949 to 20-year-old Shirley Dinsdale, a ventriloquist, who won for being the Most Outstanding Television Personality. The national broadcast premiere of the Emmys was in 1955, and in 1957 the ceremony was telecast in color for the first time. The number of categories has fluctuated greatly over the years, from six to over 40, as has the wording of the categories.



Photo: Sonja Flemming/CBS

Ed Asner in his Emmy-nominated appearance with Gary Sinise on *CSI-NY*

One fact remains constant, the *Primetime Emmy Award Show* has become television's most prestigious night.

QUOTABLE QUOTES

In 1964 Shelley Winters thanked "the whole motion picture academy."

"This is not the greatest moment in my life because on Friday I had a really great baked potato at Niblick's on Wilshire." Lily Tomlin after winning an Emmy in 1974.

"This is either the most courageous moment of my career, or the stupidest." Powers Booth after being the only winner to show up during the 1980 actors' strike.

"I guess I have to thank Showtime, even though they have canceled us." Blythe Danner, after winning the supporting actress in a drama for *Huff*.

INTERESTING FACTS

The Emmy statuette weighs just over four pounds and is made of copper, nickel, silver and gold.

Studio Services

Carla's Café Commissary	5692
Car Wash	5042
Client Services	5099
Emergency Line	5555
Grip Dept	5711
Hair Salon	6000
Internet Access	5218
Joe's Gym	5099
Lighting	5349
Notary	5837
Parking Signs	5670
Paint Dept.	5396 / 5858
Safety Hotline	6078
Sign Shop	5395
Special Effects	5671
Supply Station	5001
Take 5 Coffee	5979

RECYCLING

Stage and Media	5661
<i>Paint, Solvents, Spray Cans, Rags, Brush Wash, Batteries, Videotape, CDs, DVDs</i>	
Office Recycling	5966
<i>Toner Cartridges, Paper, Cans</i>	
E-Waste Recycling	5396
<i>Anything with a circuit board, ie TVs, Monitors, Recorders, Keyboards, Florescent Lights</i>	

Safety & Security

Attention all CBS & Production Drivers: Please obey all RED LIGHTS near the stages by stopping and shutting off your engine until the red light turns off.

Please observe the speed limit (8mph), stop signs and pedestrian crossings. The Studio has the contractual right to refuse entrance to any repeat violator of our Safety Rules. Studio Security strictly enforces this policy.

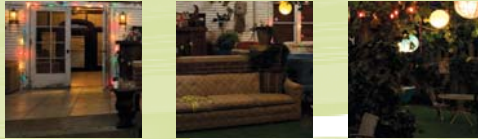
The Security Department would like to remind everyone that the Safety Hotline is anonymous and confidential. If you observe an unsafe situation, please report it by calling extension 6078. There is also a safety suggestion box located at Carla's Café.

CORRECTION: In Memorium on Charlie Davis incorrectly stated he worked on a CBS Films production of *The Incredible Hulk* when it should have said *Beastly*

Newsletter Staff

Contributing Editor Marsha Gorodkin
Design Elizabeth Gulick

PRODUCTION SCHEDULE



- CSI:NY
(CBS PRODUCTIONS/ CBS)
- ENTERTAINMENT TONIGHT
(CBS TV DISTRIBUTION/CBS)
- THE INSIDER
(CBS TV DISTRIBUTION/ CBS)
- TRACEY ULLMAN'S STATE OF THE UNION
(ALLAN MCKEOWN PRODUCTIONS/ SHOWTIME)
- GARY UNMARRIED
(FTP PRODUCTIONS/CBS)
- RUBY AND THE ROCKITS
(FTP PRODUCTIONS/ABC FAMILY)
- UNITED STATES OF TARA
(BLIND DECKER PRODUCTIONS/ SHOWTIME)
- ACCIDENTALLY ON PURPOSE
(CBS PRODUCTIONS/CBS)
- BIG BROTHER 11
(OUR HOUSE PRODUCTIONS/CBS)
- RITA ROCKS
(RITA ROCKS PRODUCTIONS/LIFETIME)
- PARKS AND RECREATION
(OPEN 4 BUSINESS/NBC)
- 100 QUESTIONS FOR CHARLOTTE
(OPEN 4 BUSINESS/NBC)
- GREEK
(ZETA BETA PRODUCTIONS/ABC FAMILY)

SEPTEMBER

Hispanic Heritage Month
Ovarian Cancer Awareness Month

- 12 Peacock Foundation Fundraiser at CBS Studio Center
- 13 11th Annual Ovarian Cancer Coalition Walk/Run at CBS Studio Center
- 18 Rosh Hashanah begins at sundown
- 19 4th Annual Huntington's Disease Walk/Run at CBS Studio Center
- 22 Autumn Begins
- 23 CBS Health Fair at CBS Studio Center
- 27 Yom Kippur begins at sundown

HOLLYWOOD OVATIONS

61ST PRIMETIME EMMY AWARD NOMINATIONS

Outstanding Casting for a Comedy Series

United States Of Tara • Showtime
Showtime presents in association with DreamWorks Television
Allison Jones, Original Casting By
Cami Patton, CSA, Casting By
Elizabeth Barnes, CSA, Casting By

Outstanding Cinematography for a Half-Hour Series

According To Jim • Heaven Opposed To Hell
ABC • ABC Studios
George Mooradian, Director of Photography

Outstanding Hairstyling For A Single-Camera Series

Tracey Ullman's State Of The Union
Episode 202 • Showtime
Showtime Presents in association with Allan McKeown Presents LLC
Martin Samuel, Department Head Hairstylist
Colleen Labaff, Hairstylist

Outstanding Main Title Design

United States Of Tara • Showtime
Showtime presents in association with DreamWorks Television
Jamie Caliri, Director/Designer
Dave Finkel, Creative Director
Brett Baer, Creative Director
Alex Juhasz, Illustrator
Anthony Scott, Lead Animator
Morgan Hay, Title Producer

Outstanding Makeup for a Single-Camera Series

Little Britain USA • 106 • HBO • 19
Entertainment/MBST Entertainment Limited in association with HBO Entertainment
John E. Jackson, Department Head Makeup Artist
Chris Burgoyne, Makeup Artist
Matthew Mungle, Makeup Artist



In what shows did Ed Asner star on the CBS Studio Center lot?

ANSWER on page 4

HOLLYWOOD OVATIONS

61ST PRIMETIME EMMY AWARD NOMINATIONS *cont'd*

Outstanding Prosthetic Makeup for a Series, Miniseries, Movie or a Special

Little Britain USA • 105 • HBO • 19
Entertainment/MBST Entertainment Limited in association with HBO Entertainment
John E. Jackson, Special Makeup Effects Dept. Head
Matthew W. Mungle, Prosthetic Designer, Special Makeup Effects Artist,
Chris Burgoyne, Makeup Artist

Tracey Ullman's State Of The Union
Episode 205 • Showtime
Showtime Presents in association with Allan McKeown Presents, LLC
Matthew Mungle, Prosthetic Designer, Special Makeup Effects Department Head,
Sally Sutton Craven, Department Head Makeup Artist
Kate Shorter, Additional Makeup Artist

Outstanding Original Music and Lyrics
United States Of Tara • Showtime
Showtime presents in association with DreamWorks Television
Tim DeLaughter, Main Title Theme by

Outstanding Lead Actress in a Comedy Series
United States Of Tara • Showtime
Showtime presents in association with DreamWorks Television
Toni Collette as Tara Gregson

Samantha Who? • ABC • ABC Studios
Christina Applegate as Samantha Newly

The Sarah Silverman Program
Comedy Central Central Productions/Eleven Eleven

Outstanding Guest Actor in a Drama Series
CSI: NY • Yahrzeit • CBS
A CBS/Paramount Television Production
Edward Asner as Abraham Klein



And The Emmy Goes To...

CONTINUED FROM PAGE 1

From 1955 to 1971 the Emmys were simulcast from both New York and Los Angeles to quell jealousies between rival cities. This often resulted in the screen going blank for up to one minute.

Jackie Gleason never won an Emmy for *The Honeymooners*, but sidekick Art Carney won five.

Huckleberry Hound was the first cartoon series to take home an Emmy.

50 YEARS AGO

Some 1959 Emmy Award Winners:

Outstanding Program Achievement in the Field of Drama – Playhouse 90 (CBS)

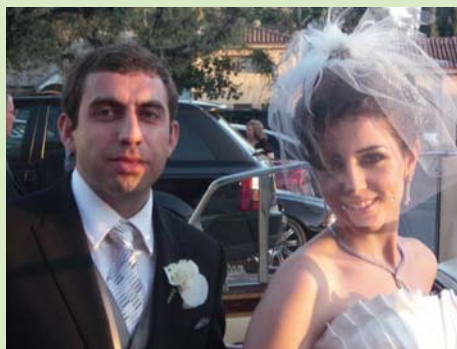
Outstanding Achievement in the Field of Variety – Fabulous Fifties (CBS)

Outstanding Achievement in the Field of Music – Leonard Bernstein & the NY Philharmonic (CBS)

Outstanding Writing Achievement in Drama – Rod Serling, *Twilight Zone* (CBS)



Weddings, Kids and such



*Amy Muradyan, Accounts Payable
On your recent nuptials to Jiro Petrosyan
August 23, 2009*

Environmental Tips from

TerraPass



OFFSET YOUR CARBON FOOTPRINT

WHAT IS A CARBON OFFSET?

A carbon offset is a certificate representing the reduction of one metric ton (2,205 lbs) of carbon dioxide emissions, the principal cause of global warming. Although complex in practice, carbon offsets are fairly simple in theory. If you develop a project that reduces carbon dioxide emissions, every ton of emissions reduced results in the creation of one carbon offset. Project developers can then sell these offsets to finance their projects. For example, a wind farm generates clean energy, which reduces carbon emissions from coal-burning power plants. In order to finance its operations, a wind farm can sell these reductions in the form of carbon offsets.

THE TERRAPASS STORY

TerraPass is the brainchild of Dr. Karl Ulrich at the University of Pennsylvania. Along with 41 of his students, Karl launched TerraPass in October, 2004 as a way to help everyday people reduce the climate impact of their driving. We've helped individuals and businesses to reduce over 1 billion pounds of carbon dioxide.

We work directly with carbon reduction projects, providing revenue to dairy farms, landfill gas installations and other projects that yield carbon credits. As of March 2009, we have 2.5 million tons of CO₂ under management for sale to wholesale and retail customers.

WHY BUY CARBON OFFSETS?

TerraPass carbon offsets helps you mitigate your own contribution to global warming by funding greenhouse gas reductions. Of course, fighting climate change begins with conservation. Drive as fuel-efficient a car or truck as possible. Reduce your driving by carpooling, bicycling, or using public transportation. Cut back on plane travel. Lower your thermostat.

But most people will still have a carbon footprint. With TerraPass carbon offsets, you can balance out 100% of the emissions you can't eliminate through conservation.

TerraPass has a calculator which figures your carbon footprint and allows you to purchase your carbon offset.

www.terrapass.com



Gangadin

finest indian cuisine

Since 1984 • Serving in same location for 24 years!

Some comments from critics:

If you find better Indian food than Gangadin, I'd like to know about it.
L.A. WEEKLY

Gangadin is a small, elegant Indian Restaurant notable for its excellent grade meats and almost oil free vegetarian dishes.
L.A. TIMES

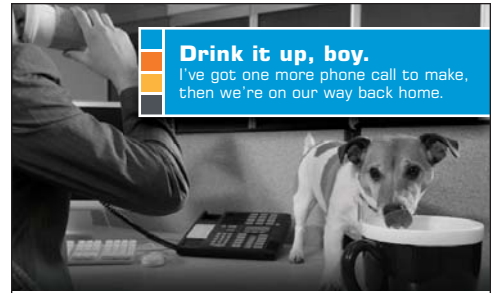
Now judge for yourself!
Visit our Booth at Farmer's Market on Sundays and join us for combination lunches 10:30 am – 1:30 pm.

Now serving excellent Vegan entrees!
... around the corner from CBS.

5 ITEM LUNCH SPECIAL
Starting at \$8.95

Lunch: Mon thru Fri • 11:30am to 2pm
Dinner: Mon thru Sun • 5:30pm to 10pm

TAKE OUT • DELIVERY • CATERING
12067 Ventura Place • Studio City 91604
(818) 509-0722



Drink it up, boy.
I've got one more phone call to make, then we're on our way back home.

Get the same savings as Essex employees when you lease at Studio 40-41

All CBS employees who rent an apartment at Studio 40-41 will receive 20% off our market rents and 50% reductions in security deposits!*

*Offer expires November 30, 2009.
Must present your CBS badge to leasing agent.

One and two-bedroom apartment homes

4041 Radford Ave. **STUDIO**
Studio City, CA **4041**
866.964.0829 **APARTMENTS**
ESSEX Studio4041.com

Catering

Delivery

to the lot for individual orders

Take Out

Dining In

we're just moments away

Zach's
ITALIAN CAFE

- Salads
- Pizzas
- Subs
- Pasta
- Chicken Dishes
- Seafood Dishes

10820 Ventura Boulevard
Studio City • 818-762-4225
www.zachscafe.com

trivia answer

Ed Asner starred in the *Mary Tyler Moore Show* (1970-1977) and *Lou Grant* (1977-1982) here at CBS Studio Center

To place ads in this publication... please call Marsha, Client Services at (818) 655-5099

AD SIZES & RATES

Single	2.5" w x 1.5" tall\$50
Double	2.5" w x 3" tall\$100
Triple	2.5" w x 4.5" tall\$150
2xDouble	5.25" w x 3" tall\$200
2xTriple	5.25" w x 4.5" tall\$300

Artwork must be submitted in high res (300dpi) in pdf, psd, eps, tif or jpg.

File correction rates are billed at \$40/hour with a one hour minimum.

Full Catering Services Available!
Special Sushi Parties - Cocktail Parties - Private Parties
Buffet Style with Dessert Station

AHI SUSHI

12915 Ventura Blvd. @ Coldwater Canyon
Studio City, CA 91604 • 818-981-0277

D'ELEGANCE CATERING

CREW FEEDS • SPECIAL EVENTS
ALL OCCASIONS

at CARLA'S CAFÉ ext. 5692

PRINTED ON RECYCLED PAPER
CONTAINING A MINIMUM OF 10%
POST-CONSUMER RECYCLED CONTENT

3962 LAUREL CANYON BOULEVARD • STUDIO CITY, CALIFORNIA 91604
PHONE [818.509.0003] FAX [818.509.8932]

nuprint
& GRAPHICS, INC.

FULL COLOR PRINTING • HIGH SPEED COPYING
HEADSHOTS • COLOR OUTPUT • GRAPHIC DESIGN
FILM OUTPUT • HEADSHOTS • STAPLING
DIE-CUTTING • MATCHPRINTS • FOIL • LAMINATION
BUSINESS CARDS • LABELS • POSTERS • SCANNING